



Outgate Procedures for haul away carriers from North Atlantic Distribution (NORAD)

PRIOR TO LOADING

During business hours – 0700 – 1600 Monday through Friday (Non-Holiday)

- Vehicles must be inspected prior to moving to load.
- **All** damages noted **must be** reviewed and confirmed by Yard Management prior to moving to load.
- If damage is found, contact the Yard Manager @ 401-667-6441 and send email to FCAGMDamages@noradinc.com to document all damages with AIAG code prior to moving to load.
- After reviewing reported damage, Yard Manager will make notations on the outgate paperwork and reply to the notification email with OK to ship confirmation, then the vehicle is OK to move to load.
- In some cases, severity 3 and above damages will not be allowed to ship due to OEM reporting requirements. Yard Manager will respond accordingly to the notification email.
- If there is a pink slip in the vehicle documenting a damage and you agree with the assessment, the damage can be noted on the outgate and the pink slip will count as notification and approval to ship.
- After inspection and prior to moving the vehicle, remove bar code sticker, apply it to your paperwork without blocking the damage codes.

Outside of business hours

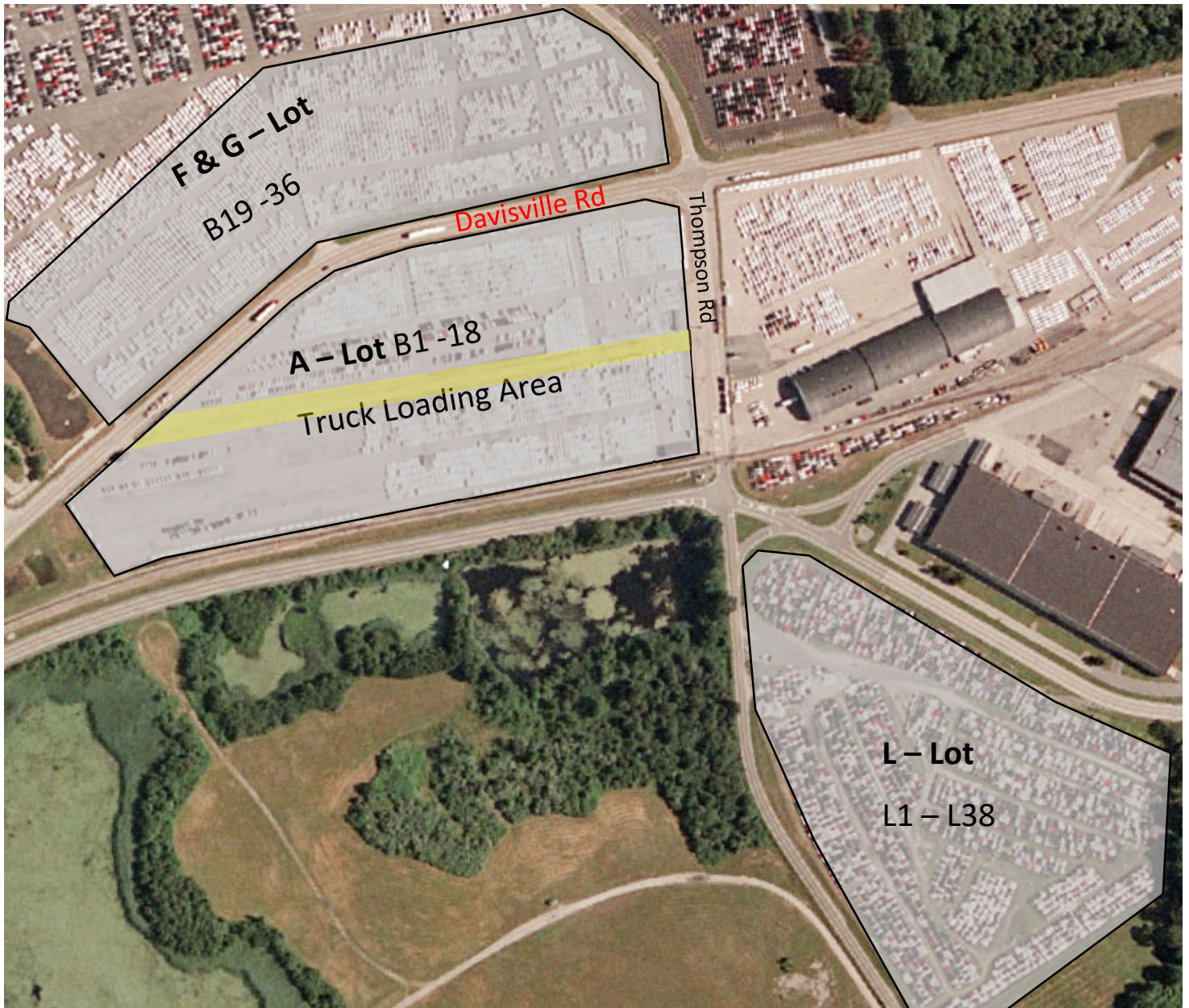
- After the hours noted, severity 1-2 damages **will be** allowed to leave, if noted as such on the out-gate paperwork. Damages **must** be presented to guard in the lot the vehicle is parked in prior to exit.
- Damages with severity 3 or greater need to be reported via email to fcagmdamages@noradinc.com and must not be moved. Be sure to report the damage using the AIAG code system. We will revert the next business day with further instructions as provided by the OEM.
- If there is a severity 3 or higher damage that has already been approved to ship, there will be a “pink slip” on the dash. If your assessment of the damage matches what is on the paper, you may use this as approval to ship but the damage must be noted on the outgate paperwork. If you disagree with the damage code on the “pink slip,” treat it as a new damage and report it accordingly.
- After inspection and prior to moving the vehicle, remove bar code sticker, apply it to your paperwork without blocking the damage codes.

AFTER LOADING

- Present Out-gate paperwork with bar code stickers attached to Security at gate exit.
- Out-gate paperwork will be collected. We will not make copies. If stamps are applied to your paperwork and you would like them applied to a second copy you provide; we can do that or you can take a picture.
- Once scanned out, driver will be allowed to leave.
- No handwritten approvals on outgate paperwork, texts, or calls will be acceptable for outgating.

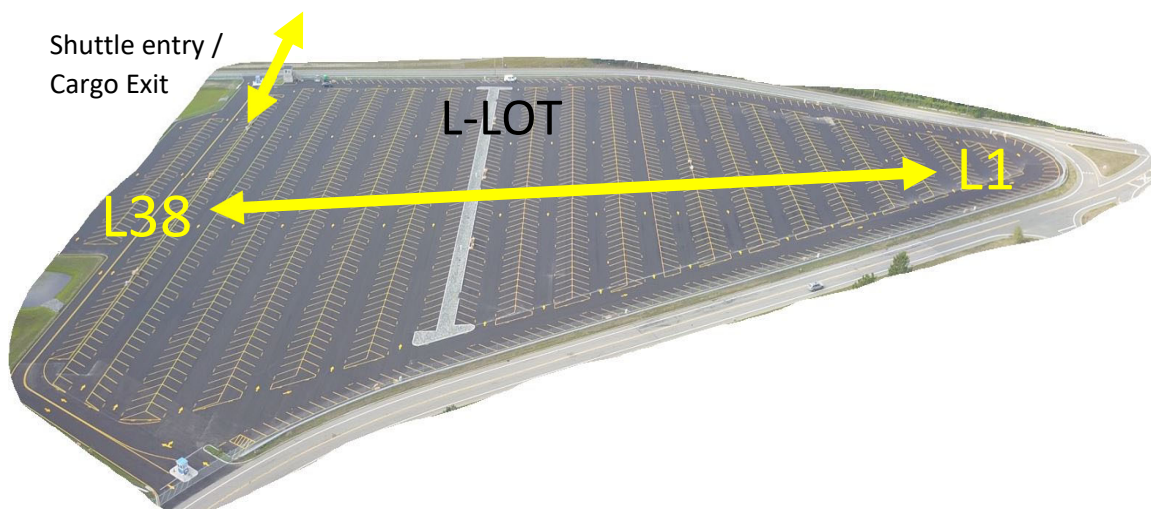
North Atlantic Distribution (NORAD)

Haul Away Lots



Lot Locations

Lot Details



Presented in 5 numbers AATTS, 2 number area code (AA), 2 number type code (TT), 1 number severity code (S)

01	Antenna/Antenna Base	34	Rear Multimedia and/or speakers	67	OPEN
02	Battery, Small, Low Voltage (If High Voltage use code 49)	35	Rocker Panel /Outer Sill Left	68	Carpet, Front
03	Bumper/Cover/Exterior, Front	36	Rocker Panel /Outer Sill Right	69	Center Post, Right
04	Bumper/Cover/Exterior, Rear	37	Roof	70	Center Post, Left
05	Bumper Guard/Strip, Front	38	Running Board/Step, Left	71	Corner Post/Pillar, Rear, Left
06	Bumper Guard/Strip, Rear	39	Running Board/Step, Right	72	Left Front Tire
07	Door Back Cargo - Right	40	Spare Tire	73	Left Front Wheel/Rim
08	Door Back Cargo- Left	41	Charging Cable for Battery Electric Vehicle (BEV)	74	Left Rear Tire
09	Door, Cargo (Sliding) R/L	42	Splash Panel/Spoiler Front	75	Left Rear Wheel/Rim
10	Door, Left Front	43	Open	76	Right Rear Tire
11	Door, Left Rear	44	Gas Tank	77	Right Rear Wheel/Rim
12	Door, Right Front	45	Tail Light/Hardware	78	Right Front Tire
13	Door, Right Rear	46	Truck Cab, Rear	79	Right Front Wheel/Rim
14	Fender, Left Front	47	Corner Post/Pillar, Rear, Right	80	Cowl
15	Qtr. Panel or Pick-Up Box, Left	48	Left Front Interior Trim Panel	81	Gas/Battery Door/Fuel Cap
16	Fender, Right Front	49	Battery, Large, High Voltage	82	Fender- rear, left
17	Qtr. Panel /Pick-Up Box Right	50	Right Front Interior Trim Panel	83	Fender – rear, right
18	Front Floor Mats	51	Tonneau Cover	84	Tools/Jacks/Spare-Tire Mount & Lock
19	Rear Floor Mats	52	Deck Lid/Tailgate/Hatchback	85	Improper Chock Securement and/or vehicle spacing. Do not transmit this code.
20	Glass Windshield	53	Sun Roof/Glass Roof	86	Parking Sonar System
21	Glass Rear	54	Undercarriage/Other	87	A-Pillar/Corner Post, Front, Left
22	Grille	55	Cargo Area, Other	88	A-Pillar/Corner Post, Front, Right
23	Throw-Ins/Loose Items (Accessories, Cigarette Lighter, Headphones, Cords, Multimedia Kit)	56	Convertible Top	89	Trailer Hitch, Wiring Harness Tow Hooks
24	Headlight/Cover/Turn Signal	57	Wheel Covers/Cap	90	Frame
25	Lamps, Fog/Driving/Spot Lt.	58	Open	91	Exhaust System
26	Headliner	59	Wipers, All	92	License Bracket
27	Hood	60	Jumped Chocks	93	Steering Wheel/Airbag
28	Keys	61	Box Interior, Pick-Up Truck	94	Seat, Left Front
29	Keyless Remote	62	Entire vehicle	95	Seat, Right Front
30	Mirror, Outside, Left	63	Rails, Truck bed/Light Bar	96	Seat, Rear
31	Mirror, Outside, Right	64	Deflector/Spoiler, Rear	97	Carpet, Rear
32	Major Damage (OEM use only)	65	Luggage Rack /Strips/Drip Rail	98	Interior
33	Front Multimedia and/or Speakers	66	Dash/Instrument Panel	99	Engine Compartment, Other

Damage Type Codes		
01	Bent	Deformed surface or part due to impact.
02	Inoperable	Car will not start
03	Cut	A smooth-edged serration (as if cut by a knife). Not a break or crack.
04	Dented - Paint or Chrome damaged	An inward depression of a painted or chrome surface with damage to the paint or chrome present.
05	Chipped - Does not apply to glass or panel edge	An area missing paint caused by impact. Do not use to describe chipped panel edge (34).
06	Cracked - Does not apply to glass	A narrow opening of flaw as a result of impact; the pieces remain together.
07	Gouged	A groove or cavity causing damage to metal or plastic surface.
08	Missing	Part or option is not present at time of inspection.
09	Scuffed	A scrape mark that does not break the surface material.
10	Stained or Soiled - Interior	Discoloration of an interior surface by a foreign substance.
11	Punctured	A hole caused by being pierced.
12	Scratched - Does not apply to glass	A linear mark or cut in painted or chrome surfaces.
13	Torn	Similar to cut but, edges of damage area are ragged.
14	Dented Paint/Chrome not damaged	An inward depression of a painted or chrome surface with no damage to paint or chrome.
15	Full body car cover - damaged	Use when full body cover has transportation damage (does not pertain to Wrap Guard/Transit/Shipping film).
16	Thermal Event/Fire	Used to document evidence of a thermal event or fire is visible.
18	Molding/Emblem/Weather-Strip Damaged	Damage to the molding or emblem of a specific damage area resulting from impact to that part or to a directly adjacent part.
19	Molding/Emblem/Weather-strip Loose	Loosening of the molding or emblem of a specific damage area resulting from impact to that part or an adjacent part. Do not use to describe molding or emblems improperly installed at the assembly plant.
20	Glass Cracked	Cracked as a result of impact, but pieces remain together.
21	Glass Broken	Glass has been broken as a result of impact to the glass or surrounding panel or molding.
22	Glass Chipped	A small fragment of glass removed as a result of impact.
23	Glass Scratched	A narrow linear exception.
24	Marker Light Damaged	Damage to the marker light lens or bezel mounted on a specific area of the vehicle.
25	Decal/Paint Stripe Damaged	Damage to a decal or paint stripe on the exterior of the automobile.
29	Contamination, Exterior	Examples: Industrial fallout; Iron rust particles; overspray; acid rain.

Damage Type Codes		
30	Fluid Spillage, Exterior	Discoloration of an exterior painted or bright metal surface by a fluid substance or airborne material.
31	Theft/Vandalism	Unauthorized removal of any part of the vehicle or damage caused by deliberate destruction to the vehicle or objects near the vehicle.
34	Chipped Panel Edge	The same as chipped, but along the edge of a panel, such as a door panel.
36	Incorrect Part or Option not as Invoiced	Part is incorrect or option is incorrect. Not considered transportation damage.
37	Hardware - Damaged	Damage type not described by other codes. Door handles, key locks, air horns, grab handles, etc.
38	Hardware - Loose, Missing	Damage type not described by other codes. Door handles, key locks, air horns, grab handles, etc.

Severity Codes	
1	Damage up to and including 1" in length / diameter - less than 2.5 cm
2	Damage over 1" up to and including 3" in length / diameter - 2.5 cm up to 7.5 cm
3	Damage over 3" up to and including 6" in length / diameter - 7.5 cm up to 15 cm
4	Damage over 6" up to and including 12" in length / diameter - 15 cm up to 30 cm
5	Damage over 12" in length / diameter - 30 cm and over
6	Missing/Major Damage